

# WELCOME TO SAARIJÄRVI PUBLIC LIBRARY

Main library, Sivulantie 12  
43100 SAARIJÄRVI

Tel. 014-459 8257  
Fax 014-459 8271

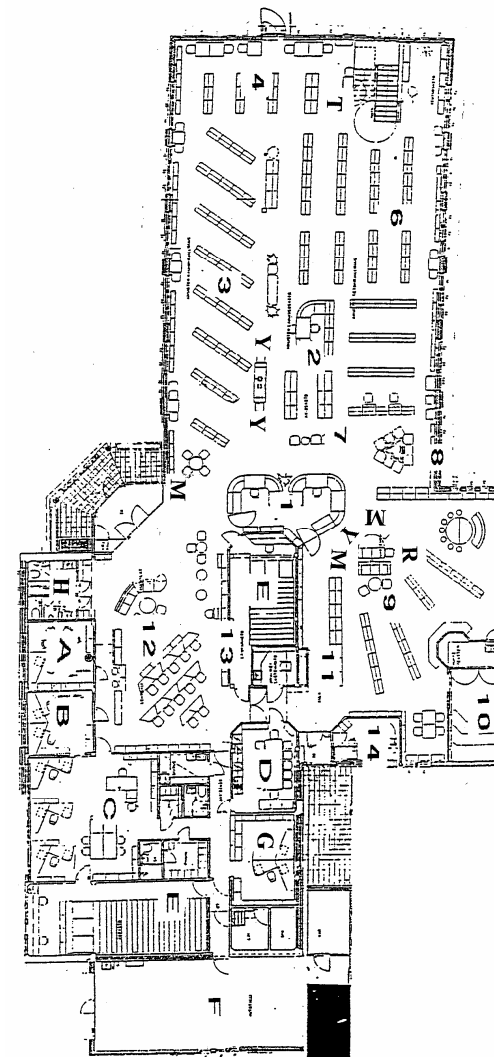
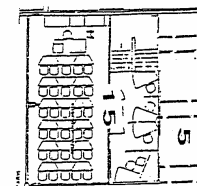
E-mail [kaukopalvelu@saarijarvi.fi](mailto:kaukopalvelu@saarijarvi.fi)

Home page: [www.saarijarvi.fi/kirjasto](http://www.saarijarvi.fi/kirjasto)

Online library catalogue: <http://saarijarvi.kirjas.to>

## Opening hours:

	<u>1.9. - 30.5.</u>	<u>1.6. - 31.8.</u>
Monday	10 - 19	11 - 19
Tue – Thursday	10 – 19	11 – 19
Friday	10 – 18	11 – 17
Saturday	10 – 15	closed
Sunday	closed	closed
On national eve days	10 - 15	



1. Lending office
  2. Information
  3. Adult's fiction
  4. Reference library
  5. Regional materials
  6. Adult's non-fiction
  7. Music and audiovisual department
  8. Listening of music
  9. Children's and junior department
  10. Fairy-tale room
  11. Music department: notes and books
  12. Newspaper and magazine room
  13. Municipal information
  14. Study chamber
  15. Study and meeting room
- A Chief librarian  
 B Work room  
 C Work room  
 D Staff's cafeteria  
 E Stocks  
 F Mobile library  
 G Inter-library lending  
 H Toilets  
 M Micro computers  
 R CD-rom  
 T Information retrieval  
 Y Public access terminals

## The collections:

- |               |                        |                  |
|---------------|------------------------|------------------|
| * books       | * newspapers           | * cassettes      |
| * magazines   | * videotapes           | * cd-roms        |
| * cd-records  | * dvd:s                | * cassette books |
| * maps        | * language courses     | * cartoons       |
| * fairy-tales | * large print material | * scores         |
- \* etc. to be borrowed or used in the library

Anyone who lives, works or is studying in Saarijärvi can join the library for free.

This library belongs to the group, called Kepri, with the neighbouring libraries. Materials from one to another can be borrowed by the same card. The first library card is free.

Materials can be returned to a materials return chute if the library is closed. You may renew materials five times, except those which are on hold. Items can be reserved by phone, through website with your codes or via the library.

## Loan periods:

Books, cassette books	four weeks
Magazines, cd-records	two weeks
Videotapes, dvd:s, cd-roms	one week

**Mobile library:** Look timetables in the main library.

**Public internet access** is available.

We have two PCs for short visits, two PCs for one hour a day -visits and one for longer -visits. Reserve time, please.

**Study-chamber:** Study room so-called “Kammio” with internet access is also available. Reserve time, please.

**AV-material:** The recordings, scores, books, videos, cd-roms, magazines, you can also listen to the music. Ask from the lending office.

**Newspaper reading room** is open every day already at 9. o'clock. You can read newspapers and magazines.

**Photocopier** is available. Copying costs 0,30 e a piece.

**Regional materials** are only for reading.

Some circulation collections are situated elsewhere e.g. in the hospital.

**Inter-library lending** services are available

**Services for children:** Fairy-tale hour is held every Friday from September to May at 9.30 o'clock.

## Classification System:

- 0 General works. Book branch. Librarianship. General cultural policy. Mass media
- 1 Philosophy. Psychology. Occult
- 2 Religion
- 3 Society
- 4 Geography. Travel. Ethnology ( 42 Finland)
- 5 Natural sciences. Mathematics. Medicine
- 6 Technology. Industry. Handicraft. Agriculture and forestry. Home economics. Business economics. Traffic
- 7 Arts. Physical exercise. Music
- 8 Literature. Study of literature. Philology ( 82 Poetry)
- 9 History ( 92 History of Finland)

